



Symposium on the

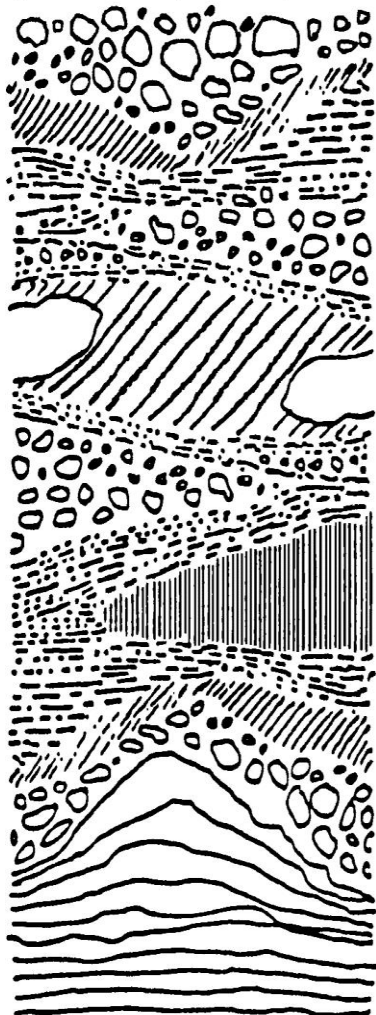
Sunday, April 30th 2017, 2:00-4:00PM
The Museum of the City of New York
Fifth Avenue between 103rd and 104th Streets

Pre-register at: www.mcny.org/archaeology
***Admission to Galleries with Program Registration**

ARCHAEOLOGY

of NEW YORK CITY

open to the general public



Keeping Up with the Times: Technology and Archaeology

Join us for the Thirty-seventh Annual Public Program sponsored by Professional Archaeologists of New York City, Inc. (PANYC) and the Museum of the City of New York for talks on the cutting edge technology used to excavate, record and analyze New York City sites.

Inside the NYC Archaeological Repository: The Nan A. Rothschild Research Center and Website

Amanda Sutphin, Director of Archaeology, New York City Landmarks Preservation Commission

Getting a Handle on John Randel: Pinning Down the Manhattan Grid in Central Park

Richard W. Hunter, PhD., President and Principal, Hunter Research, Inc.

The Lager Vaults of Schnaederbeck's Brewery in Williamsburg, Brooklyn

Celia J. Bergoffen, PhD. Adjunct Associate Professor, Fashion Institute of Technology

Applications of High Technology at the Riverside 2 Archaeological Site and Beyond

Joseph Schuldenrein, PhD., President and Principal and Kevin Wiley, PhD., Principal Archaeologist, Geoarcheology Research Associates

PANYC, Inc. is a non-profit organization of local professional archaeologists concerned with discovering and conserving our cultural heritage. <http://www.panycarchaeology.org>.



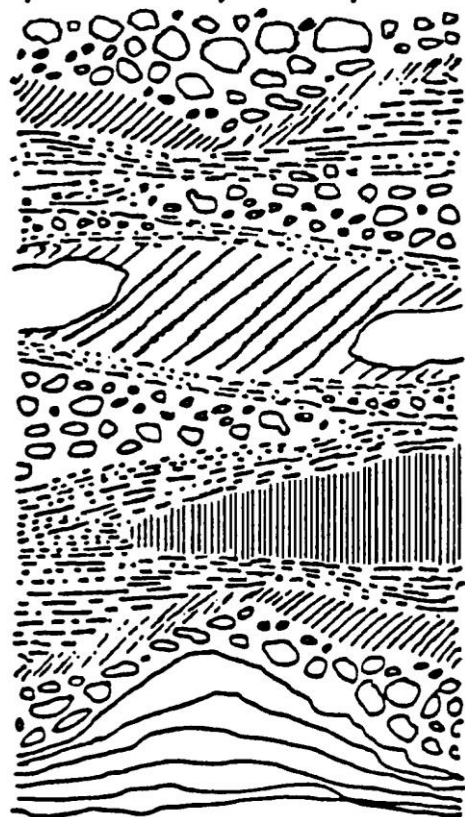
Symposium on the

ARCHAEOLOGY of NEW YORK CITY

Keeping up with the Times: Technology in Archaeology

**Thirty-seventh Annual PANYC Public Program
Co-sponsored with the Museum of the City of NY
S u n d a y , A p r i l 3 0 t h 2 0 1 7**

open to the general public



Professional Archaeologists of New York City, Inc. (PANYC) is a non-profit organization of local professional archaeologists concerned with preserving and protecting the archaeological and historical resources of New York City and educating the community about our cultural heritage. We would like to thank all those who made this year's PANYC Public Program possible. This includes staff members of the Museum of the City of New York, especially Tracy McFarlan, Public Programs Manager and Lilly Lesser, Public Programs Assistant as well as this year's PANYC Public Program Committee: Lynn Rakos, Joan Geismar and Linda Stone. We especially thank all who participated in the program and all who attended.

Please visit our website: www.PANYCarchaeology.org

37th ANNUAL PANYC Public Program
Presented by Professional Archaeologists
of New York City (PANYC) and the Museum
of the City of New York

Keeping up with the Times:
Technology in Archaeology

2:00 Welcome Lynn Rakos, Program Chair

2:10 Inside the NYC Archaeological Repository: The Nan A. Rothschild Research Center and Website Amanda Sutphin, Director of Archaeology, New York City Landmarks Preservation Commission (NYCLPC)

The NYCLPC launched a new website, www.nyc.gov/archaeology, to showcase the city's extensive archaeological collections excavated from sites throughout the city and containing artifacts ranging from a projectile point used by a hunter 8,000 years ago in College Point to an early 20th-century toy tea cup found in Battery Park. This talk will give a glimpse into the Nan A. Rothschild Research Center collections and provide a demonstration of the new website.

2:30 Getting a Handle on John Randel: Pinning Down the Manhattan Grid in Central Park Richard W. Hunter, PhD., President and Principal, Hunter Research, Inc.

Through a mixture of happenstance and concerted, systematic study of maps, archival records and the landscape, several of John Randel's survey markers for the original early 19th-century Manhattan grid have recently come to light in the wilds of Central Park. These discoveries, sponsored by the Central Park Conservancy, have relied especially on Randel's remarkable surveying and mapmaking skills, but have been helped along by the use of computerized cartographic and spatial analytical techniques available in ArcGIS, notably "rubber sheeting" and georeferencing. One of the stone survey monuments was also subjected to archaeological excavation.

2:50 PANYC Awards

Nan Rothschild, Awards Chair
Special PANYC Award for Outstanding Contributions Made by a Non-Archaeologist to New York City Archaeology: Mr. John Krawchuck, Executive Director, Historic House Trust

3:10 The Lager Vaults of Schnaederbeck's Brewery in Williamsburg, Brooklyn Celia J. Bergoffen, PhD., Adjunct Associate Professor, Fashion Institute of Technology

Four adjoining, massive stone and brick lager vaults were discovered 14-feet below grade in the heart of Williamsburg's former lager brewing district. Unlike other beers, lager yeast ferments at the bottom of the vat and the brew must age at low temperatures. Before refrigeration, this was accomplished in subterranean vaults. Schnaederbeck was among the first to produce lager here and his cellars, built before 1860, are among the oldest. These vaults have been thoroughly documented using photogrammetry. 3-D models were created combining videos of the vault interiors with videos of the top of the structures captured by drone.

3:30 Applications of High Technology at the Riverside 2 Archaeological Site and Beyond Joseph Schuldenrein, PhD., President and Principal and Kevin Wiley, PhD., Principal Archaeologist, Geoarchaeology Research Associates

Archaeological excavations at the Riverside 2 site on the Upper West Side necessitated state of the art computerized mapping, geoarchaeological applications, and 3-D modeling. These strategies were integrated to plan and execute the excavation and also document, analyze, and interpret archaeological findings. The "High Technology" of today's archaeology is quickly becoming the standard practice of tomorrow's archaeology.

3:50 Wrap-up Lynn Rakos, Program Chair